

POS System and its Peripherals Overview

1
Automation
Panel
Solutions

2
All-in-One
Touch POS

3
Digital
Signage

4
Video Wall
Controller

5
RISC-
based
Solutions

6
PACSmate
Medical

7
Optional
Peripherals



EP-165E

- Second display support including digital signage, monitor and VFD display.
- Full I/O interface for peripherals
- Smart mechanical design
- Dust-proof CPU protection
- Heat-dissipated aluminum chassis
- IP 64 compliant front panel
- Optional Wireless communication enabled



EP-265E

- Modular construction design for easy maintenance
- 20°~90° adjustable main display
- Support second display with adjustable swivel angle
- Two 2.5" SATA hard disk bays and one CF card slot for storage
- Effective heat dissipation system
- I/O interface for easy peripherals connection
- Optional wireless LAN for remote communication
- IP 64 compliant front panel



EP-308A

- 8" Mini POS with Intel® Atom™ processor
- Small footprint satisfies limited space requirements
- Built-in resistive touch screen
- Built-in 2" easy-loading thermal printer
- Extendable connections for peripheral devices
- Optional 802.11 b/g wireless LAN
- IP 64 compliant front panel



Customer Display



Barcode Reader



Thermal Printer



Cash Drawer



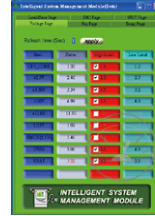
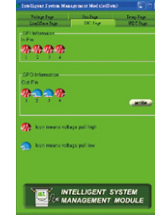
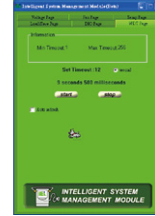


Supervision Utility for POS Solution

The ISMM monitors system settings to prevent system instability or damage. The ISMM monitors system temperatures and voltages, cooling fans, watchdog timer and digital I/O.

Benefits:

Know that the system is running within safe limits.
Get the best system performance out of your system.

INTELLIGENT SYSTEM MANAGEMENT MODULE

Temp.	Fan	Voltage	DIO	WDT	Save/Load	Cash drawer
						
CPU + System temperature monitoring	Dynamic fan controlling	Real time voltage alarm	Easy Digital I/O configuring	Trouble free watch dog timer testing	Flexibility user profile selection	Cash Drawer Control

• Watchdog timer prevents system lock-up

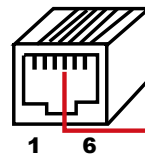
The watchdog timer will automatically restart the system if it stops responding, ensuring dependability during unattended operation.



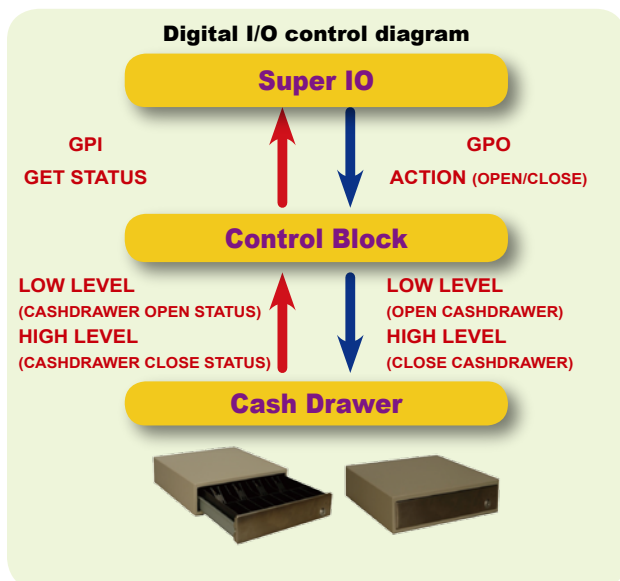
• Two Digital I/O with 12V/24V power for cash drawer

IBX POS PC is equipped with a digital I/O RJ-12 12V port that provides extension for peripherals such as a cash drawer device, lamp, alarms etc.

Cash Drawer RJ-12 Pin Assignments

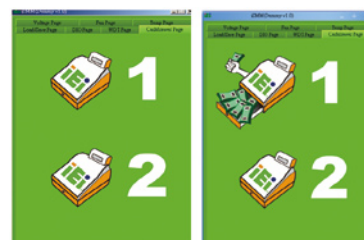


Pin	Assignment
1	Ground
2	CASH_1 (Digital Out Programmable)
3	Digital IN
4	+12V
5	NC
6	Ground



IEI ISMM cash drawer status monitoring

IEI also provides a quick and easy tool to develop cash drawer application for POS program



Free ISMM API Support

1
Automation Panel Solutions

2
All-in-One Touch POS

3
Digital Signage

4
Video Wall Controller

5
RISC-based Solutions

6
PACsmate Medical

7
Optional Peripherals

Specifications



Model	EP-165E-910	EP-165E-N270	EP-265E-GM45	EP-265E-N270	EP-308A-N270		
LCD Size	15"	15"	15"	15"	8"		
CPU	Intel® Celeron® M 1GHz / 512KB L2 cache	Intel®N270 Atom™ 1.6G	Intel® Celeron® M 2GHz / 1MB L2 cache	Intel® Atom™ N270 1.6GHz	Intel® Atom™ 1.6G N270 processor		
Chipset	Intel® 910GMLE + ICH6-M	Intel® 945GSE + ICH7M	Intel® GM45 + ICH9M	Intel® 945GSE + ICH7M	Integrated in Intel® 945GSE		
Graphic	Integrated in 910GMLE with DB-15 VGA output	Integrated in 945GSE with DB-15 VGA output	Integrated in GM45 with DB-15 VGA output	Integrated in 945GSE with DB-15 VGA output	Integrated in Intel® 945GSE		
Memory	Built-in 1GB DDR2 memory system supports 2 x 240 pin dual channel DDR2 400/533MHz up to 2GB	Built-in 512MB DDRII memory system supports one 200 pin dual channel DDRII 667MHz up to 2GB	Built-in 1GB DDR2 memory system supports 2 x 240 pin dual channel DDR2 667/800MHz up to 2GB	Built-in 512MB DDR2 memory system supports 1 x 200 pin dual channel DDR2 400/533MHz up to 2GB	Built-in 1GB DDR2 memory System support one 200-pin dual-channel 667 MHz DDR2 up to 2 GB		
Max Resolution	1024 x 768	1024 x 768	1024 x 768	1024 x 768	800 x 600		
Brightness (cd/m ²)	250	250	250	250	250		
Contrast Ratio	600:1	600:1	600:1	600:1	500:1		
LCD Color	16.7M	16.7M	16.7M	16.7M	262K		
Pixel Pitch (mm)	0.297(H) x 0.297(V)	0.297(H) x 0.297(V)	0.297(H) x 0.297(V)	0.297(H) x 0.297(V)	0.2025(H) x 0.2025(V)		
Viewing Angle (H-V)	160° / 160°	160° / 160°	160° / 160°	160° / 160°	130° / 110°		
Backlight MTBF	40000 hrs	40000 hrs	40000 hrs	40000 hrs	30000 hrs		
Touch Screen	Resistive Type 5-Wire, Support RS-232 interface. Capacitive Type supported by order	Resistive Type 5-Wire (touch controller IC is on board) DMC9000 (Support RS-232 interface)	Resistive Type 5-Wire, Support RS-232 interface. Capacitive Type supported by order	Resistive Type 5-Wire, Support RS-232 interface. Capacitive Type supported by order	5-wire resistive type		
HDD	1 x 2.5" SATA HDD Bay	1 x 2.5" SATA HDD Bay	2 x 2.5" SATA HDD Bay	2 x 2.5" SATA HDD Bay	1 x 2.5" SATA HDD		
SSD	1 x CF Type II slot	1 x CF Type II slot	1 x CF Type II slot	1 x CF Type II slot	1 x CFII		
I/O Interface	Display	1 x VGA Port	1 x VGA Port	1 x VGA Port	1 x VGA Port	1 x VGA Port	
	PoweredUSB	7 x USB 2.0 2 x 5V PoweredUSB on the rear panel 2 x 5V PoweredUSB on the bottom panel 2 x 12V PoweredUSB on the bottom panel 1 x 24V PoweredUSB on the bottom panel	7 x USB 2.0 4 x USB 2 x USB (expansion slot) 1 x 12V power USB	7 x USB 2.0 2 x USB on the rear panel 2 x USB on the bottom panel 1 x 12V PoweredUSB on the rear panel 1 x 12V PoweredUSB on the bottom panel 1 x 24V PoweredUSB on the bottom panel	7 x USB 2.0 2 x USB on the rear panel 4 x USB on the bottom panel 1 x 12V PoweredUSB on the rear panel	4 x USB	
	Powered COM	5 x COM Port with LED indicators 1x 5V Powered COM on the rear panel (COM2) 2x 5V/ 12V Powered COM on the bottom panel (COM3/ COM5) 2x 12V/ RI Powered COM on the bottom panel (COM4/ COM6)	5 x COM Port COM3(12V/5V), COM4(12V/RI) COM5(12V/5V), COM6(12V/RI) COM2(12V/5V) DB9, support by IT8712F(expansion slot) LED indicators --12V:Red, 5V:Yellow, RI:Green	4 x COM Port with LED indicators 3 x 5V/ 12V Powered COM on the bottom panel (COM3/ COM4/ COM5) 1 x 5V/ 12V Powered COM on the rear panel (COM1)	4 x COM Port with LED indicators 3 x 5V/ 12V Powered COM on the bottom panel (COM3/ COM4/ COM5) 1 x 5V/ 12V Powered COM on the rear panel (COM1)	2 x RJ45 COM Port	
	Cash Drawer Port	2 x 12V/ 24V RJ-12 connectors for cash drawer	2 x RJ11 connectors, 12V/24V for cash drawer	2 x 12V/ 24V RJ-11 connectors for cash drawer	2 x 12V/ 24V RJ-11 connectors for cash drawer	1 x 12V	
	LPT	1 x DB-25	1 x External Parallel port, DB-25	1 x DB-25	1 x DB-25	--	
	LAN	1 x giga LAN	1 x PCIe Realtek RTL8111CP giga LAN	1 x giga LAN	1 x giga LAN	1 x giga LAN	
	Wireless	802.11 a/b/g with PIFA antenna, PCIe interface	Option WIFI card	802.11 b/g with PIFA antenna, PCIe interface (Option)		(Option)	
	Audio	3W + 3W amp. audio jack on the bottom	3W amp. + 3W amp. Audio connector on the SBC bottom	3W + 3W amp. audio	3W + 3W amp. audio jack on the bottom	1.5W + 1.5W amp	
	Power Switch	1 x 12V/ 24V 5 pin DC-IN Power Jack 1 x Power Switch with LED on Front Panel 1 x AT / ATX Switch	1 x AT / ATX Switch 1 x 12V DC-IN Power Jack 1 x LED on Front Panel for Power ON/OFF	1 x 12V/ 24V 2x5 pin DC-IN Power Jack	1 x 12V DC-IN Power Jack	1 x 24V DC-IN Power Jack	
	Quick Buttons	Brightness & Volume control	Brightness & Volume control	1 x Power Switch with LED on Front Panel	1 x Power Switch with LED on Front Panel	1 x Power Switch with LED on Front Panel	
	Power	Adapter	252W Power Adapter (ACE-D825A-H-RS)	150W Power adapter (FSP150-AHAN1808-RS)	252W Power Adapter (ACE-D825A-H-RS)	252W Power Adapter (ACE-D825A-H-RS) 150W Power Adapter (FSP150-AHA312-RS)	FSP070-RAA607, VAC:90~264V, 24V/70W
		Input	12V/24V DC in	12VDC in	12V/24V DC in	12V DC in	24VDC in
		Output	12VDC at 3.0A, 24VDC at 3.0A	12VDC Max 3.0A	12VDC at 3.0A/24VDC at 3.0A	12VDC at 3.0A/24VDC at 3.0A	12VDC Max 3.0A
	Consumption	88W	100W	100W	70W	40W	
Mounting	Main display: STAND & VESA 100 Wall Mounting Second display: VESA 75 mounting	Main display: STAND & VESA 100 Wall Mounting Second display: VESA 75 mounting	N/A	N/A	N/A		
Construction	ABS + PC Plastic front Panel Aluminum Alloy Chassis	ABS + PC Plastic front Panel Aluminum Alloy Chassis	ABS + PC Plastic Front Frame Aluminum Alloy Chassis	ABS + PC Plastic Front Frame Aluminum Alloy Chassis	Aluminum Chassis		
Color	Black	Black	Black	Black	Black / Silver		
Operation Temperature (°C)	0~40°C	0~35°C	0~40°C	0~40°C	0°C~40°C		
IP Level	IP64 (Front Panel)	IP64 (Front Panel)	IP64 (Front Panel)	IP64 (Front Panel)	IP64 (Front Panel)		
Safety & EMI	CE / EMC / FCC / CB / UL	CE / EMC / FCC / CB / CCC	CE / EMC / FCC / CB / UL / CCC	CE / EMC / FCC / CB / UL / CCC	CE / EMC / FCC / CB / CCC / UL / BSM		
Dimensions (WxHxD)	387 x 321 x 221 mm	321.33 x 220.86 x 386.73 mm	373 x 390 x 335 mm	373 x 390 x 335 mm	320 x 217 x 141 mm		
Net Weight	8.34 Kg	8.34 Kg	8.30 Kg	8.30 Kg	2.80 Kg		

1
Automation Panel Solutions

2
All-in-One Touch POS

3
Digital Signage

4
Video Wall Controller

5
RISC-based Solutions

6
PACSmate Medical

7
Optional Peripherals